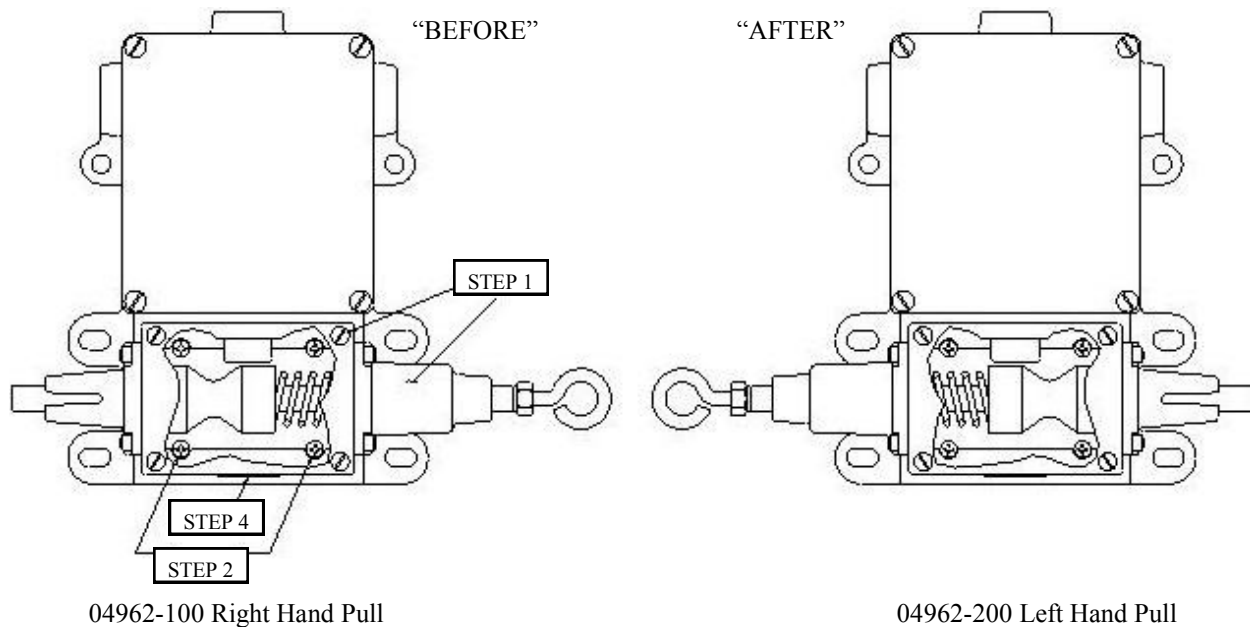


Instructions for the conversion of
REES
Catalog Numbers
04962-100 or 04962-200

Following is the **bench procedure**,
to be performed by **qualified personnel**,

To convert a 04962-100 Right Hand Pull into a 04962-200 Left Hand Pull,
or to convert a 04962-200 Left Hand Pull into a 04962-100 Right Hand Pull.

1. Remove the cover from the Cam Shaft Enclosure Assembly.
2. Remove **ONLY** the four (4) 10-32 Pan Head attachment screws.
3. Slide the Cam Shaft Enclosure Assembly off the Switch Base.
4. Remove the Plastic Hole Plug from the bottom of the Cam Shaft Enclosure.
5. Place the Plastic Hole Plug in the opposite hole.
6. Make sure the gasket between the base and Cam Shaft Enclosure is still in place.
7. Slide the Enclosure Assembly onto the Switch Base in the new position.
8. Secure with the (4) 10-32 screws. Torque to 20/25 in.-lbs. (23-28.8 cm-kg).
9. Replace the Cam Shaft Enclosure cover.
10. Install according to the Switch Installation Instructions.



WARNING—DANGER

These products should only be used where point-of-operation guarding devices have been properly installed and maintained so that all appropriate OSHA and ANSI B.11 regulations and standards are met. Misapplication of these products on machinery lacking effective point-of-operation safeguards can cause serious injury to the operator of that machinery.

AVERTISSEMENT - DANGER

Ces produit doivent seulement être utilisés sur des postes à risque correctement sécurisés et entretenus afin d'être conforme aux standards et réglementations en vigueur (CSA, CLC).
Un mauvais usage de ces produits sur des machines et des postes de travail non sécurisés de manière efficace peut causer des blessures graves au technicien maniant ces machines.

Instructions for the maintenance and lubrication of:
REES, Inc. Cat. Nos. 04962-100 or 04962-200
 Cable Operated Switch w/ Broken Cable Detection

Please read ALL of the instructions before performing any maintenance operation(s)

1. Although these switches have been designed and constructed to operate without a problem for a minimum of 250,000 operations, regular Preventive Maintenance inspections are recommended. It is advised that the switch be inspected at least every 50,000 operations or 6 months, whichever comes first.
2. Some conditions to watch for are:

A. Proper trip and reset tensions.	E. Any worn components.
B. Physical damage to the device.	F. Loose cable connections.
C. Physical damage to the cable.	G. Any loose components.
D. Frayed wiring.	
3. Lubrication: Under normal operating conditions the switch should not require any additional lubrication. If, during a routine inspection, it is determined that additional lubrication is warranted then the following guidelines are to be adhered to. Over lubrication at critical points can cause the switch to operate slowly and may appear as a malfunction. Refer to the drawing below for reference lubrication points.

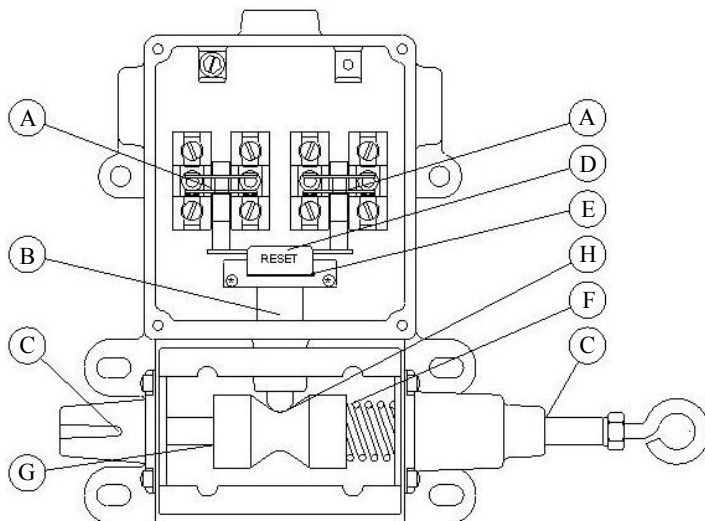
CAUTION:

The black plastic components found at points "A", "E", and "G" are molded from a polycarbonate material and certain contact cleaners, solvents and penetrating oils will attack this plastic and cause the switch to fail. Chlorinated Hydrocarbons MUST be avoided. Read the label of any product that is to be used to determine its compatibility.

Lubrication Points:

A: Moving contact / carrier	Lubrication is not necessary. Do Not lubricate.	
B: Trip Latch Mechanism	1 - 2 drops very light oil.	
C: Shaft / Bearings	1 - 2 drops very light oil.	Note: Oil impregnated bearings, Do Not use any grease.
D: Reset Latch / Shaft	Very light oil.	
E: Reset Latch Springs	Very light oil.	
F: Spring / Spring seat	A minimal amount of extreme pressure (anti-seize) grease.	
G: Shaft / Cam	A minimal amount of extreme pressure (anti-seize) grease.	
H: Cam / Plunger	A generous amount of extreme pressure (anti-seize) grease.	

Suggested Lubrication: For "B", "C", "D", and "E" use Multipurpose Machine Oil - SAE 5 or equivalent.
 For "F", "G", and "H" use Thermalene EP Grease "0" or equivalent.



Notes:

If there are any additional questions please contact us at one of the following:

REES, Inc. Fremont, IN 46737 260-495-9811 FAX 260-495-2186 www.reesinc.com